



Gibbon Road, London

Let

£1,038 pw

Available NOW • VIDEO AVAILABLE • Newly-Refurbished to a High Specification • Five Large Double Bedrooms • Large Separate Fully Fitted Kitchen • Dining Room • Large Dual Aspect Living Room • Modern Private Garden • Three Large Modern Bathrooms • Access to a Number of Transport Links

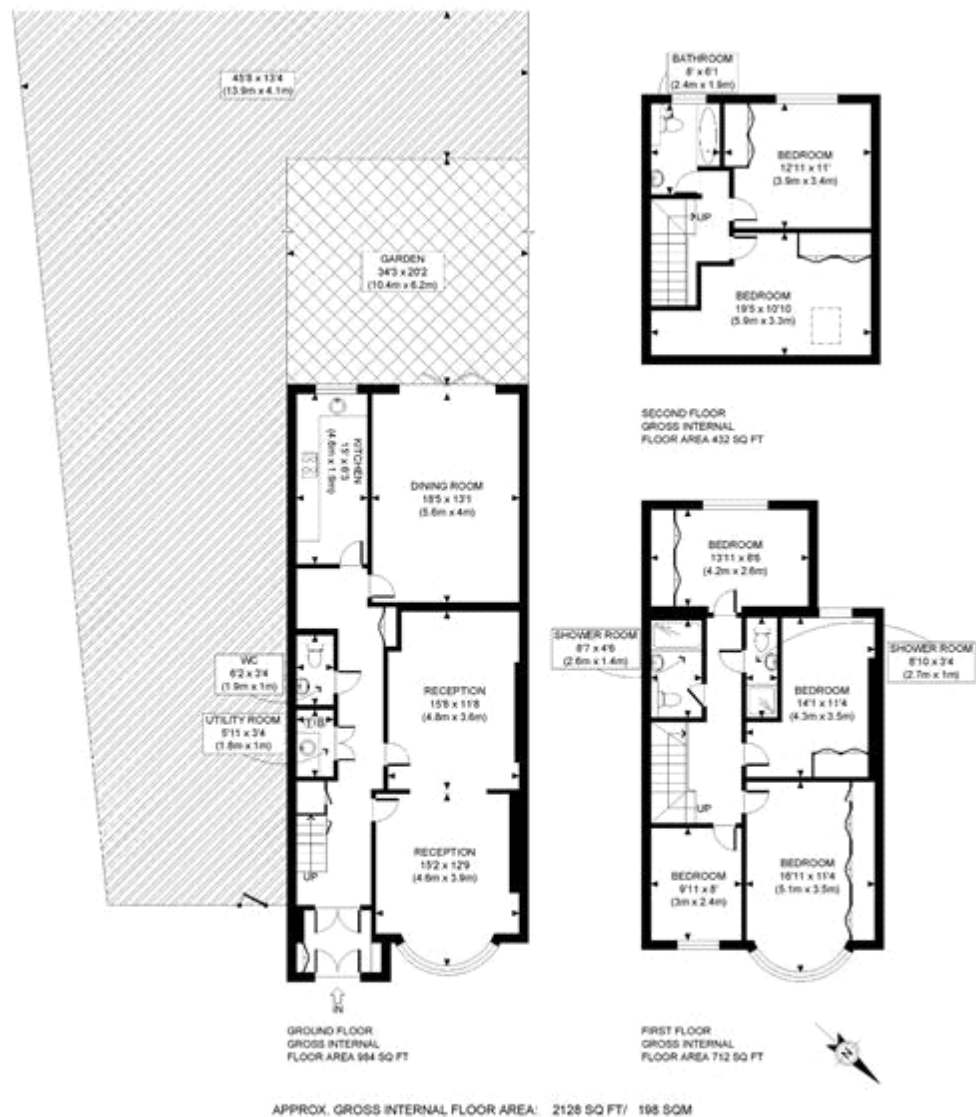
Features

- Available NOW
- 5 double bedrooms
- Close to Acton Main Line (Elizabeth Line)
- Close to Acton Central (Overground)
- Close to East Acton Station
- Driveway



Scan for more details on this property

Gibbon Road, London



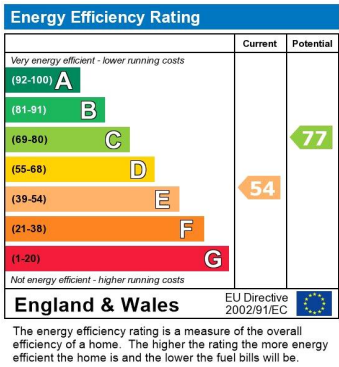
PROPERTY PHOTO PLANS.CO.UK
ONE STOP SHOP FOR PROPERTY MARKETING

This plan is for illustrative purposes only and should be used as such by any prospective client. Whilst every attempt has been made to ensure the accuracy of the Floor Plan contained here, measurements of the doors, windows, rooms and any other items are approximate and no responsibility is taken for any errors, omissions, or misstatement. The services, systems and appliances shown have not been tested and no guarantee as to the operability or efficiency can be given.

Council Tax Band: F (Ealing Council)

Deposit: £5,190

Holding Deposit: £1,038



115 Churchfield Road, London W3 6AH
T: 020 8896 0800 E: info@citydeal.co.uk
www.citydeal.co.uk

CITYDEAL

Disclaimer
Whilst every effort is made to ensure our particulars are both accurate and reliable, it is not guaranteed, nor do they form part of an offer or contract. If you require clarification on any points, please contact us. Additionally, please note that appliances and heating systems have not been tested and therefore no warranties can be given as to their good working order.