



## Colville Road, Acton W3 8BL

Let

£50,000 pa

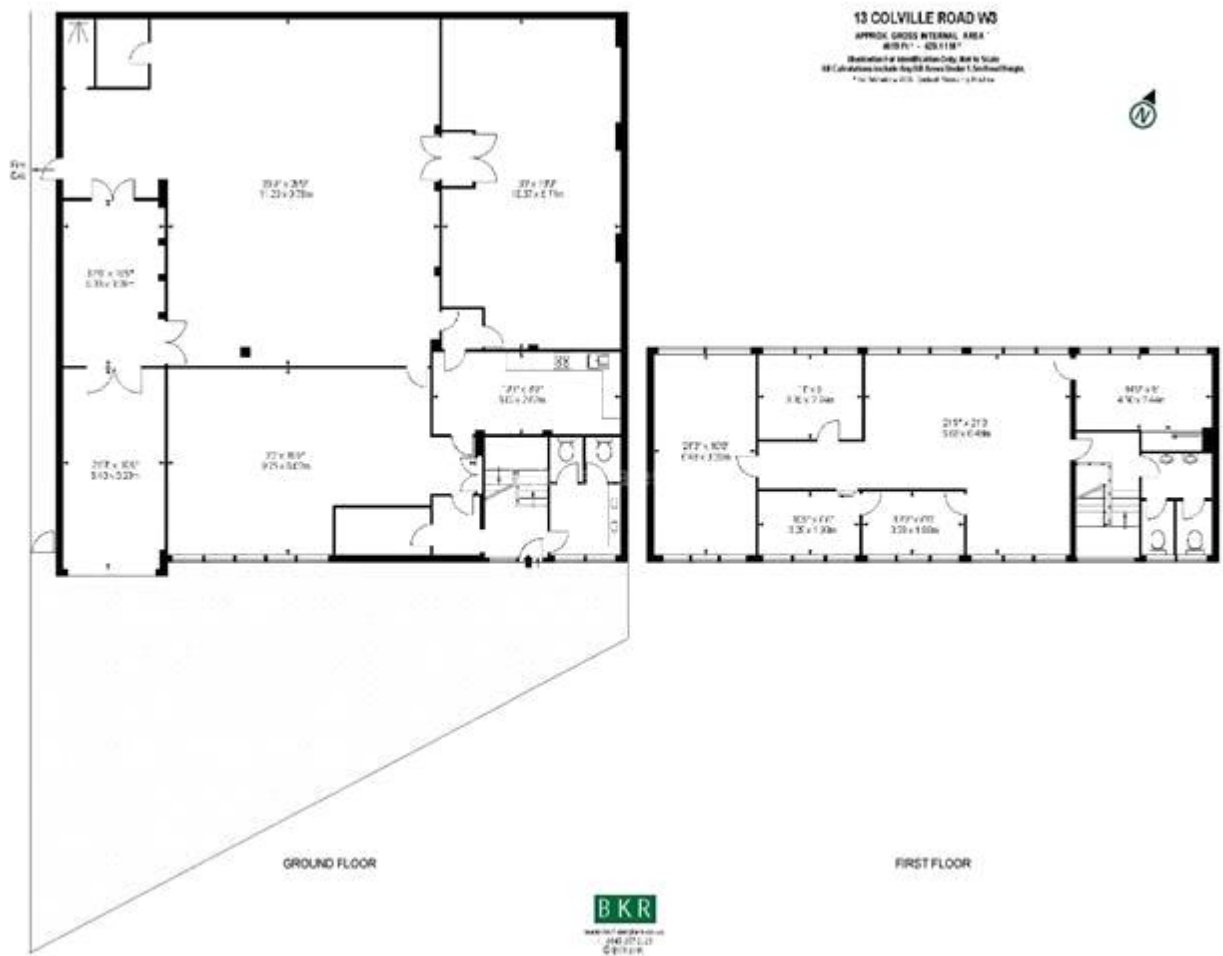
Large 4,600sqft, two storey, commercial site in North Chiswick Business Park, W3. Floor plan attached. There is ample off street parking (6 + car park spaces) and a loading bay. Perfect for storage or factory.

### Features



Scan for more details on this property

## Colville Road, Acton W3 8BL



115 Churchfield Road, London W3 6AH

**T:** 020 8896 0800 **E:** [info@citydeal.co.uk](mailto:info@citydeal.co.uk)

[www.citydeal.co.uk](http://www.citydeal.co.uk)

### Disclaimer

Whilst every effort is made to ensure our particulars are both accurate and reliable, it is not guaranteed, nor do they form part of an offer or contract. If you require clarification on any points, please contact us. Additionally, please note that appliances and heating systems have not been tested and therefore no warranties can be given as to their good working order.

**CITYDEAL**

